

TITANIUM MEDIUM DUTY RACKS

Keep your boxes, files, household tools and equipment, sacks and bags in good order.

Shelves available in solid steel or melamine boards. Will not warp, absorb water and easily burn. Available in widths of 1.20 and 2.00 meters.

Excellent choice for supermarkets, factories, hotels, barangays and warehouses.



Specifications

L1200MM MDF SHELVES OPEN SLOT

Dimension : L1200 x W400 x H1830mm
 Colors : White, Gray, Silver Gray
 Thickness : Post: 1.2mm, Beam: 0.8mm,
 Wooden shelf: 9mm
 Load / shelf : 100 kgs
 Load / rack : 500 kgs
 Shelf boards : Melamine laminated shelves
 Frame : Powder coated steel, rust
 resistant
 No. of shelves : 5 shelves

EXTRA SHELF

Dimension : L1200 x D400mm
 Thickness : Beam : 0.8mm
 Surface treatment : Powder coating

L1200MM STEEL SHELVES OPEN SLOT

Dimension : L1200 x W400 x H1830mm
 Colors : White, Gray, Silver Gray
 Thickness : Post: 1.2mm, Beam: 0.8mm
 Load / shelf : 100 kgs
 Load / rack : 500 kgs
 Shelf : Steel
 Frame : Powder coated steel, rust
 resistant
 No. of shelves : 5 shelves

EXTRA SHELF

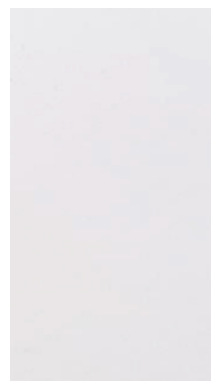
Dimension : L1200 x D400mm
 Thickness : Beam : 0.4mm
 Surface treatment : Powder coating



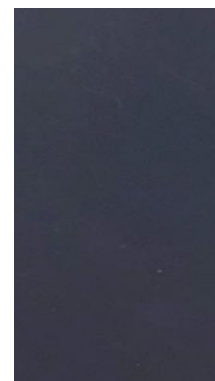
Steel Shelves Racks

FEATURES

1. Shelves are made of Melamine laminated boards. Waterproof. Won't warp or sag even when soaked in water. Steel frame are made of powder coating.
2. Optional shelves and side panels available for additional charge. Available only in WorldCraft. No where else.
3. Shelves may be adjusted in height.
4. Comes in box package. Easy to carry even on motorcycle.
5. WorldCraft has most complete rack models: steel racks, wire racks and wire cart.



White



Gray



Silver Gray

We have resellers in Metro Manila and we are developing our network of resellers in key cities and towns nationwide. You may want to join us.

Or, if you just want to purchase from us, tell us your location. We will ask a reseller to PM you. marketing@worldcraft.com.ph • www.worldcraft.com.ph